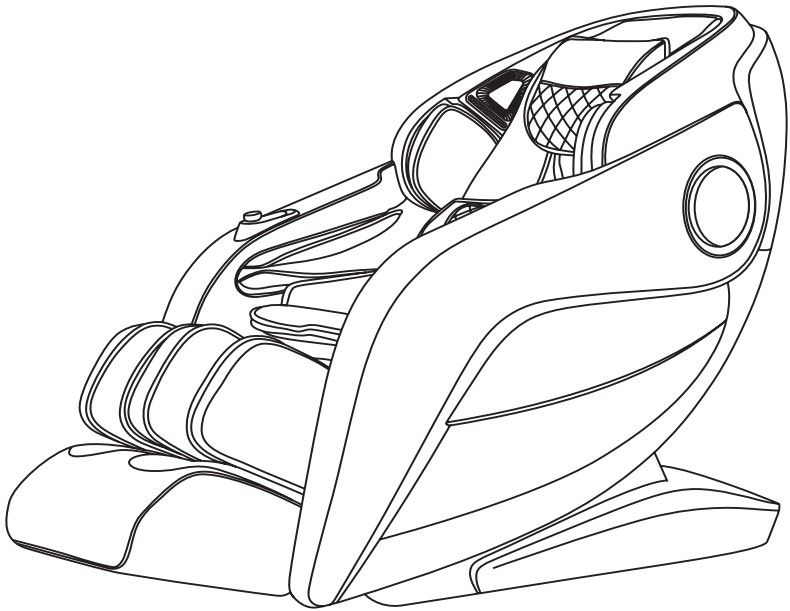




PERSONAL CARE

## **Premium Smart 3D massage chair**



Instructions EN: 2-41

**SAVE THESE INSTRUCTIONS**

**Thank you for purchasing this Witt Personal Care product.  
Before using it, please read these instructions carefully and pay particular attention to the safety instructions in order to ensure a correct functionality and use of the chair.**

**Please note: We reserve the right to make ongoing changes/updates to the product without prior notice.**

SAFETY INSTRUCTIONS .....	4
OVERVIEW OF THE MASSAGE CHAIR .....	8
FUNCTIONS AND CHARACTERISTICS.....	9
HOW TO OPERATE .....	10
1. Turn on the massage chair .....	12
2. Massage functions .....	12
3. Overview of shortcut keys on the left armrest of the massage chair .....	30
4. Voice control.....	32
5. Turn off the massage chair, stop the massage.....	33
6. Bluetooth .....	33
7. Installing armrests .....	33
8. Installing leg support .....	35
9. Floor protection .....	38
10. Move the chair.....	38
SPECIFICATIONS .....	39
WARRANTY AND SERVICE .....	40
ENVIRONMENT .....	41

# SAFETY INSTRUCTIONS

---



## 1. Important safety instructions

- Children are not permitted to use the massage chair.
- The massage chair must be properly grounded. The plug must always be inserted into a suitable socket that is correctly installed in accordance with all local regulations.
- Remove the plug after you have used the chair and before cleaning to avoid damage to the product or injuries to people.
- Follow the recommendations in these instructions.
- Do not use accessories that are not designed to be used with the massage chair.
- The massage chair is exclusively designed for indoors use.
- Read these instructions carefully before operating the massage chair.
- It is forbidden to use the massage chair for anything other than its intended purposes.
- Do not use the massage chair for more than 20 minutes at a time.
- Do not use the massage chair if the fabric is damaged or destroyed.
- Do not use the massage chair if the ventilation holes are covered or blocked.
- Do not drop items into the massage chair.
- Do not fall asleep while using the massage chair and it is powered up.
- Do not use the massage chair when intoxicated or if you are feeling unwell.
- To avoid discomfort, the massage chair should only be used an hour after you have eaten a meal.
- Do not use excessive power settings on the massage function to avoid injury.

## 2. The surrounding environment

- Do not use the massage chair in high temperatures or in moist environments such as bathrooms.
- Do not use the massage chair if the temperature is excessively hot or cold.
- Do not use the massage chair in very dusty or flammable environments.
- Make sure that you have plenty of space around the massage chair and that the room is properly ventilated.

## 3. The following people are advised against using the massage chair

- People with osteoporosis.
- People with heart disease or people who use electronic medical devices operated into the body such as pacemakers, etc.
- People with a fever.
- Pregnant or menstruating women.
- People with a skin disease or damaged skin.
- Children under the age of 14 or people with physical, sensory or mental impairment who are not sufficiently experienced or lack the relevant skills. Exceptions are permitted if such people are being supervised.
- People who are getting medical treatment by a doctor or people who feel unwell.
- It is not permitted to use the massage chair when wet.
- The massage chair has a heat functionality, so people who are sensitive to heat should be particularly careful when using it.

## 4. Safety instructions

- Ensure that the power supply is suitable for this specific product. Please do not use a power supply that exceeds the recommended voltage, as this may cause fires or damage the product.
- To avoid electric shocks, do not handle the plug if you have moist hands.
- Do not let water seep into the massage chair, as this can cause electric shocks or damage the product.
- The cord must not be damaged or bent excessively. Do not make alterations to the electric circuits.
- Do not use a wet rag to clean the massage chair's electric components such as the plug and socket.
- Keep a distance from the massage chair during power cuts to avoid damage if the power suddenly comes back on.



## **SAFETY INSTRUCTIONS**

---

- Do not use the massage chair if it is not working correctly. Please contact your local retailer immediately in such cases.
- Do not use the massage chair if you are feeling unwell. Contact a doctor if that is the case.
- The massage chair is not intended to be used by children or people with physical, sensory or mental impairment or people who are not sufficiently experienced or lack the relevant skills. Exceptions are allowed for cases where such people are instructed in how to use the product and where they are initially supervised by a person who is responsible for their safety.
- Keep an eye on children to ensure that they do not play with the massage chair.
- If the cord or plug are damaged in any way, disconnect them from the power supply immediately and consult an authorised electrician for repairs or replacements.

### **5. Maintenance**

- No one except from authorised personnel selected by our company should disassemble, maintain or reconstruct this massage chair. If there are problems, please contact your local retailer immediately.
- Do not forget to disconnect the power after using the massage chair.
- If the cord or plug are damaged in any way, disconnect them from the power supply immediately and consult an authorised electrician for repairs or replacements.
- Roll the cord up and store the massage chair in an environment that is dry and free of dust if the massage chair is not to be used for an extended period.
- Do not store the massage chair in an area with high temperatures or near sources of fire and do not expose it to direct sunlight for long periods of time.
- Do not use the massage chair if the socket is loose.
- Wipe the massage chair with a dry rag when cleaning it. - Do not use thinning agents or alcohol-based solvents.
- The mechanical components on the massage chair are custom made. They do not require any special kind of maintenance.
- Do not use strong detergents on this product.
- Do not roll or pull the massage chair across uneven surfaces. The massage chair must be lifted if you need to move it.
- Do not use the massage chair continuously - do not let it run non-stop.

### **6. Functional errors may be due to:**

- If the engine is humming when it is in use, these are natural sounds from the moving parts.
- If the remote does not work, see if the plug and cord are attached correctly and make sure the switch on the socket is turned on.
- If the specified running time has passed, the massage chair will automatically turn off. If the massage chair is used continually, the temperature safeguard will ensure that the massage chair turns off automatically. The massage chair can then be used again after half an hour.

### **7. Storage**

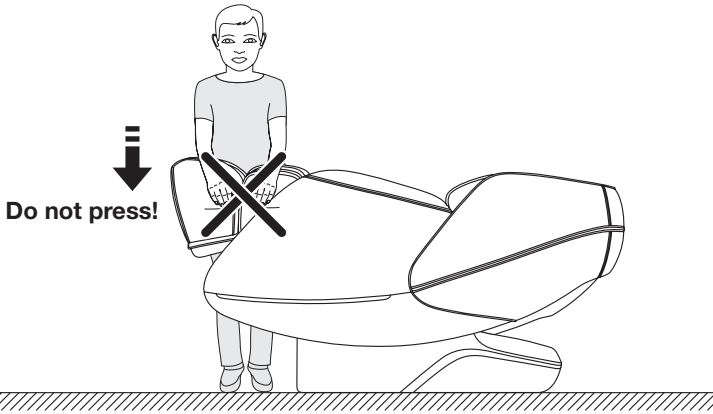
- Storage temperature: -5°C - 35°C
- Humidity: 20 % to 80 %.
- Do not store the massage chair near flammable or corrosive gases such as gasoline vapours.

## SAFETY INSTRUCTIONS

---

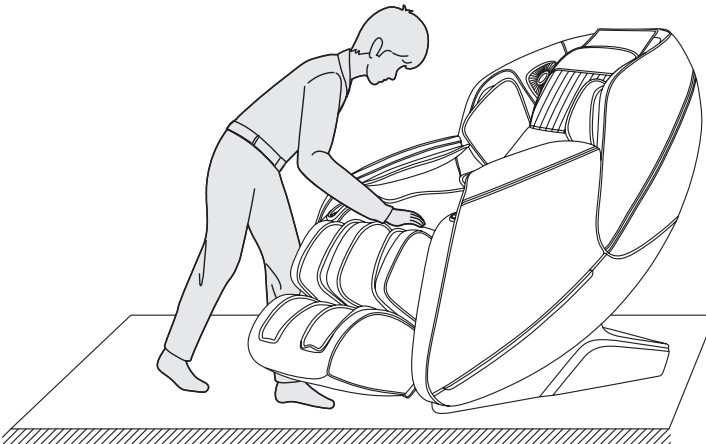
### Warning:

Do not press down on the leg support when lifting it to avoid the massage chair from tipping forward and to prevent injuries to people or damage to the product.



### Warning:

Please ensure that the massage arm is not placed in the seat before you sit on it, as this may cause injuries or damage to the product.

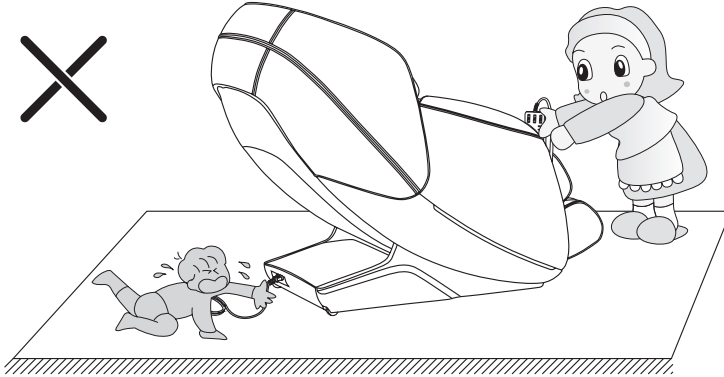


## SAFETY INSTRUCTIONS

---

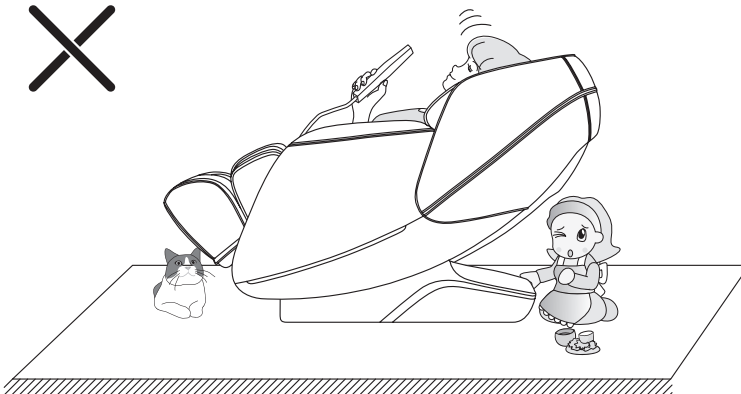
### **Warning:**

Ensure that the cord and plug are not pulled out when the massage chair is in standby mode or turned in as this may cause electric shocks or damage to the product. It is recommended to pull out the cord and put it away after using the massage chair.

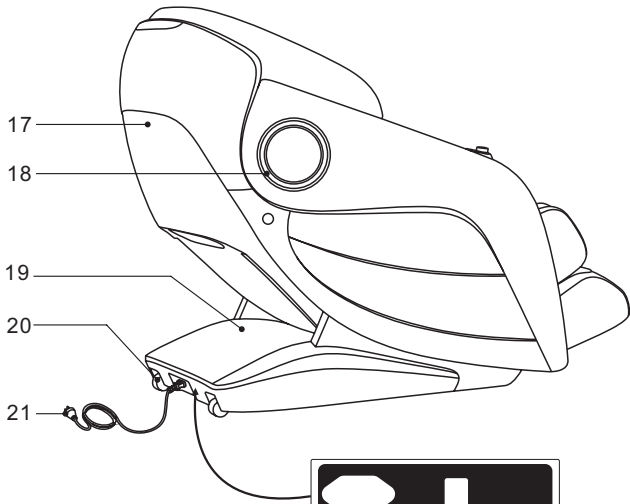
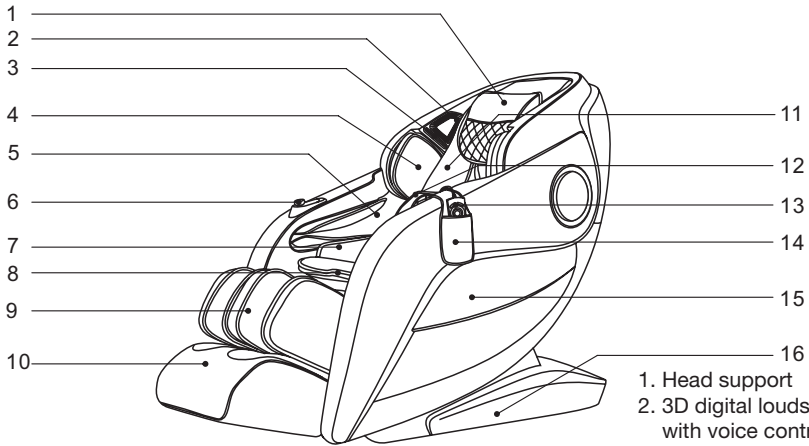


### **Warning:**

Ensure that children and pets are never playing under or nearby the massage chair, leg support and back cover before activating the zero gravity function to avoid injuries and damage to the product. It is not permitted for children and pets to play on the massage chair, particularly not when it is in use. It is also not permitted to stand or sit on the backrest or armrest.



# OVERVIEW OF THE MASSAGE CHAIR



1. Head support
2. 3D digital loudspeakers with voice control (microphone on the left side)
3. O2 ioniser air purifier
4. Upper arm: air pillows to massage the upper arm
5. Armrest: air pillow for hand massages
6. Shortcut key
7. Hip: air pillow to massage the waist
8. Seat cushion
9. Leg support
10. Foot support
11. Back cushion
12. Back: air pillow for back massages
13. Remote control
14. Remote control holder
15. Armrest cover
16. Side panel
17. Back cover
18. LED light
19. PCB cover
20. Wheel
21. Cord and plug
22. Power plug
23. On/off button

22

23

## FUNCTIONS AND CHARACTERISTICS

---

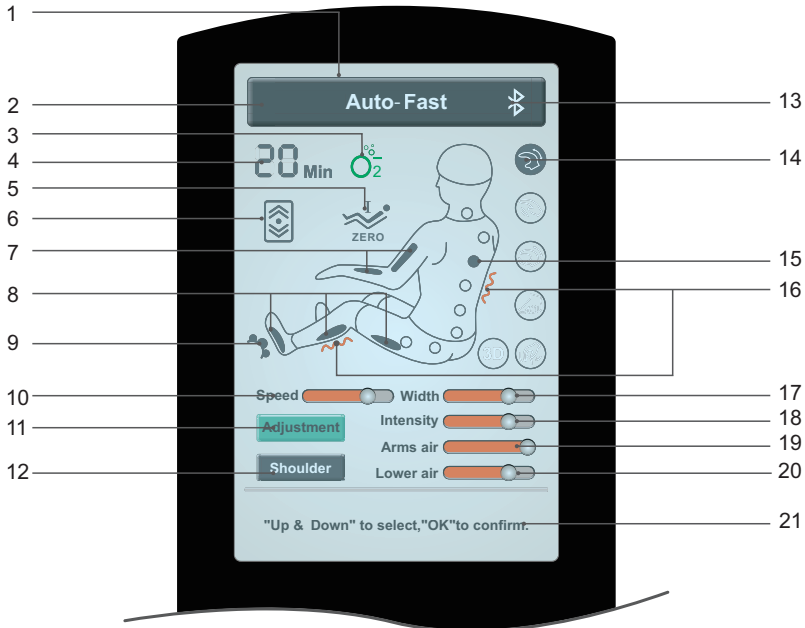
- The massage chair is designed with an intelligent and soundless 3D massage hand that can move up and down and press forward and pull back.
- The shoulder tracking function can register the precise position of shoulders and can also be adjusted manually.
- Intelligent technology automatically reads the body's height, size and shape and makes adjustments accordingly so that the body's massage and acupressure points are treated correctly.
- There are 8 preconfigured automatic massage programmes Fast, Comfort, Relax, Stretch, Full body, Shoulder and Neck, Back and waist and full-body air pressure massage.
- There are 3 memory functions: Memory I, Memory II and Memory III.
- The upper body massage function: There are 5 different massage positions to choose from:  
Full, partial, fixed point, upper back and lower back.  
Shoulder grasp, kneading, tapping, shiatsu; kneading and tapping and 3D.  
There are 6 massage techniques and 5 different speeds that can be adjusted.  
When you have chosen tapping and shiatsu (traditional Japanese massage), it is possible to choose from 5 different levels:
- Air pressure massage: pressure massage on the arms (using 8 air pillows), pressure massage on the upper arms (using 4 air pillows) and three levels of pressure intensity can be selected.
- Air pressure massage/lower body: Massage of the lower back/waist (using 4 air pillows), left and hip pressure massage (26 air pillows), air pressure massage on the feet (18 air pillows) and three different intensities of air pressure can be selected.
- The heat function for the back and legs use coal fibre as an infrared heat source. The massage chair is designed with the Zero Wall function, and the chair will only move within its own axis when the back support is leaned back on.
- The SL shape of the back support: The 135 cm long L-shaped incline provides you with the most relaxed massage position and massages you from your neck to your thighs. The ergonomic design ensures that the spine is kept in the correct S position.
- Intelligent voice control and identification function (microphone on the left side).
- Music system: designed with 3D digital loudspeakers on the left and right sides.
- You can play music wirelessly using a Bluetooth device on a smartphone, tablet, etc.
- Waist Twisting function: uses the left and right massage pillows to massage the waist which loosens up locked and tense muscles.
- The right armrest has the following buttons installed: negative oxygen ion, raise function, lower function, zero gravity, pause, auto setting and foot and leg adjustment.
- Raise or lower legs, lift and raise leg and back, zero gravity I or zero gravity II.
- Foot roller massage function: under your feet there are two pairs of rotating rollers that massage toes, arches and heels.
- The foot support is equipped with an automatic sensor that registers the length of the legs. When the legs are either raised or lowered at an appropriate angle, the foot support will automatically register the length of the legs and find the most comfortable massage area.
- Armrest with LED lights.
- Configuration of O2 ioniser by the armrest.
- The top massage arm is equipped with a width adjuster that can be adjusted to the width of the user's shoulder.
- Auto turn off. The massage chair resets automatically.
- TFT colour display manual remote.

# HOW TO OPERATE

---

## REMOTE CONTROL:

### The display



**Please note: The remote control shows colour, massage functions and associated icons. Please pay attention to the actual product!**

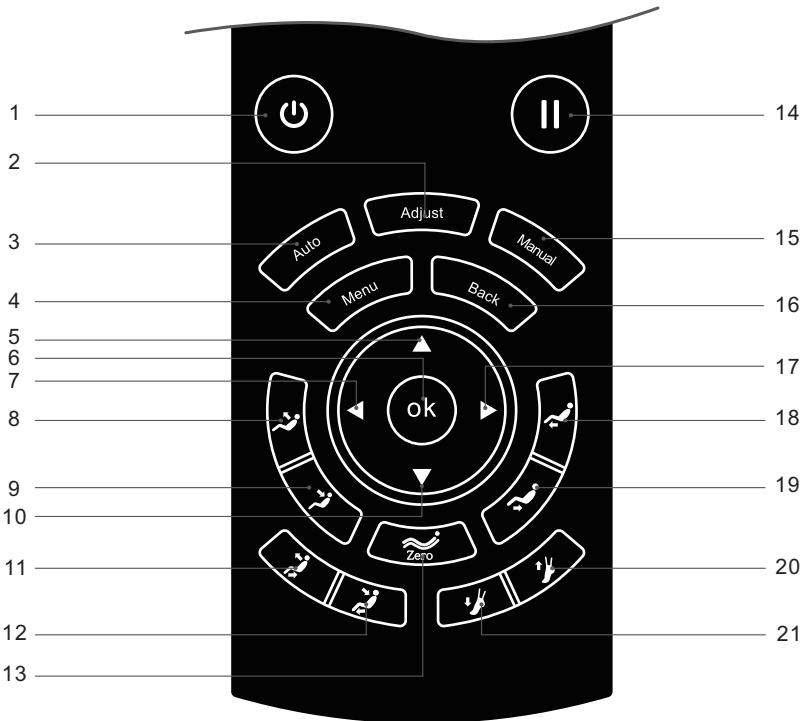
---

- |   |   |
|---|---|
| 1. FT colour display                      | 12. Adjustment of shoulder position     |
| 2. Massage status                         | 13. Bluetooth                           |
| 3. Negative oxygen ion air purifier       | 14. Massage settings                    |
| 4. Timer                                  | 15. Massage position                    |
| 5. Zero gravity                           | 16. Leg and back, heat display          |
| 6. Adjustment of back                     | 17. Adjustment of width                 |
| 7. Air pressure massage for arms          | 18. Adjustment of massage force         |
| 8. Air pressure massage for legs and feet | 19. Adjustment of air pressure: arms    |
| 9. Foot roller                            | 20. Adjust of air pressure: lower body  |
| 10 Adjusting speeds                       | 21. Shows the status of your selections |
| 11. Adjustment                            |   |

# HOW TO OPERATE

---

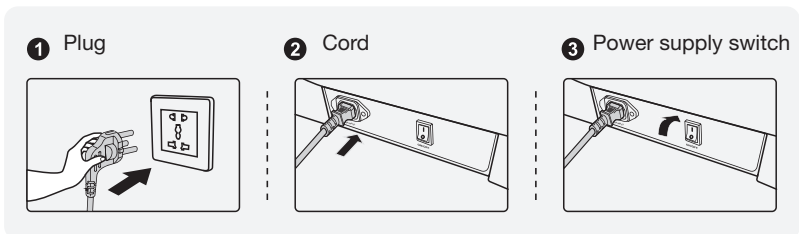
## Buttons



1. On/off: turns the massage chair on and off
2. Adjust: Adjustment button, access the menu for massage functions
3. Auto: access the automatic functions
4. Menu: access the main menu
5. Up arrow: navigation key
6. OK: confirms selection
7. Left arrow: navigation key
8. Back support: raises the position
9. Back support: lowers the position
10. Down arrow: navigation key
11. Sitting position: the massage chair is raised to a vertical position.
12. Lying position: the massage chair is lowered to a lying position.
13. Zero gravity: Adjust the massage chair's incline (zero gravity consists of two levels of massage force to address individual preferences).
14. Pause: pauses all functions
15. Manual: access the manual functions
16. Back: go back to the massage information on the display
17. Right arrow: navigation key
18. Leg support: raises the position
19. Leg support: lowers the position
20. Food support: shorten
21. Foot support: extend

# HOW TO OPERATE

## 1. Turn on the massage chair



## 2. Massage functions

### 1) Standby

- The massage chair cannot access programmes when in standby mode.



### 2) Begin the massage

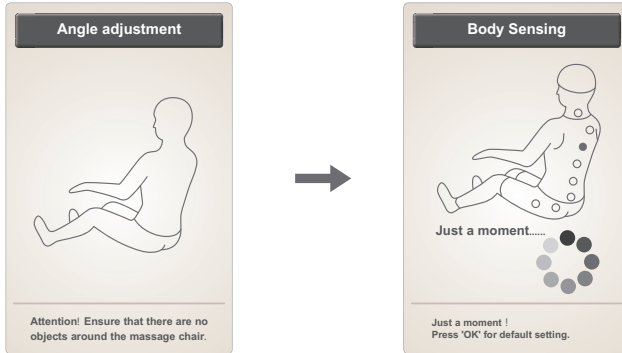
- Press the on/off button to begin a massage, go into the display menu, the back support will remain in the start position and the leg support will be raised a little, and then select an auto setting to start the massage. The massage chair will turn off automatically if no auto setting is chosen within 5 minutes.



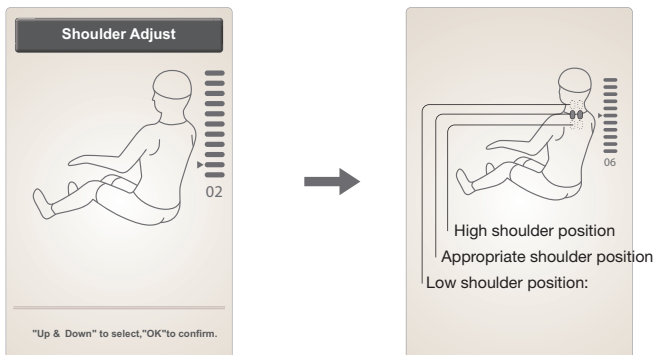


## HOW TO OPERATE

- Select an auto setting, the back support and leg position are adjusted in relation to the incline.
- After adjusting the incline, the massage chair will automatically register the position of the shoulders and body (please note: the FAST setting only registers the position of the shoulders, all other settings register the position of the shoulders and the whole body), wait until the registration is completed. If you press OK, the massage chair will begin the massage without first having registered the position of the shoulder and body.



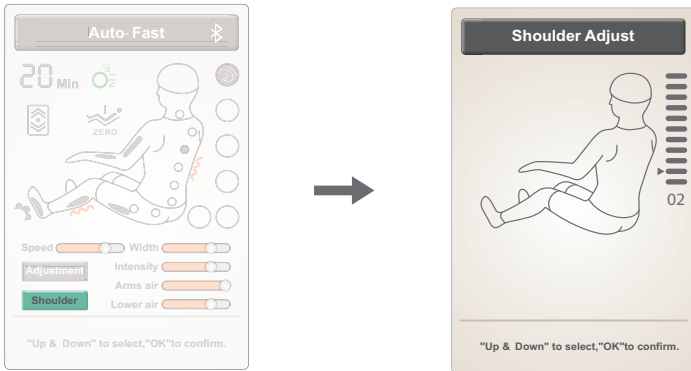
- After registering the position of the shoulders (a sound will be played), the position of the shoulders can be adjusted to the user's height. There are 11 levels to adjust with: If there are no adjustments made within 10 seconds, the massage function will be accessed automatically. You can also press the OK button to begin the massage immediately. If the massage chair does not register the position of the shoulders, the massage will begin based on the standard setting.



Button	Description
	Move the massage balls up until they are in appropriate positions.
	Move the massage balls down until they are in appropriate positions.

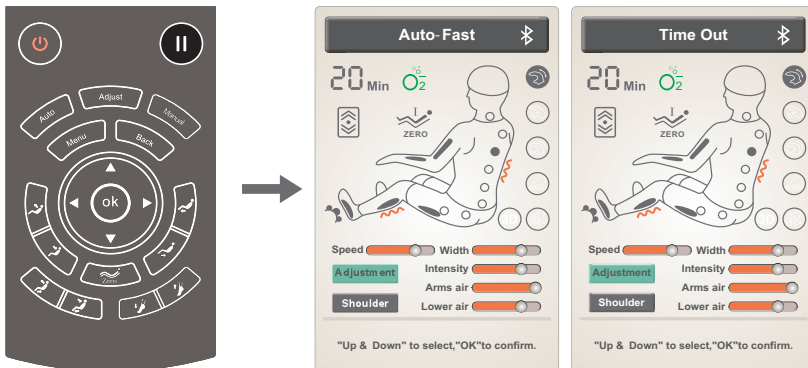
## HOW TO OPERATE

- When you are in the massage settings menu, the shoulder position can be adjusted using 'Shoulder Adjust' on the display.



### 3) Pause

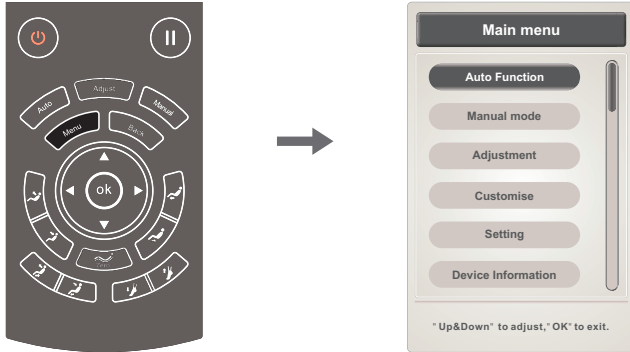
- If the Pause button is pressed during a massage, all massage functions will stop. If the Pause button is pressed again, the massage will resume. If the pause lasts for more than 20 minutes the massage function will automatically turn off.



## HOW TO OPERATE

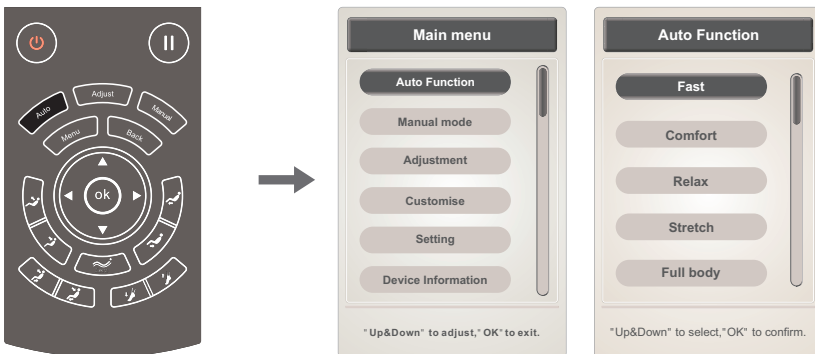
### 4) Menu

- The menu shows all massage settings and includes: Auto function, Manual mode, Adjustment, Customise, Setting, Device Information.
- Press Arrow up or Arrow down to choose a setting. Then press OK to confirm your selection. Press Back to return to your options.



### 5) Automatic

- Press the Menu button to access the main menu in the display, select the auto function icon on the screen: the auto setting includes 8 massage programmes: Fast, Comfort, Relax, Stretch, Full body, Shoulder and Neck, Back and waist and full air pressure massage.
- Press Arrow up or Arrow down to select a massage function. Then press OK to confirm your selection. Press the Back/return button to return to your options.



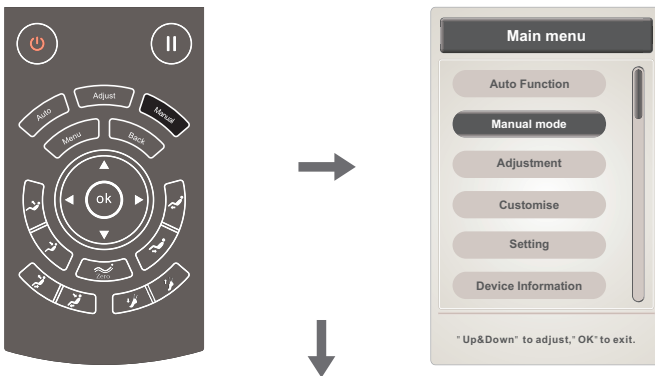
Please note: The selected massage function will be shown under massage status on the display. Press the Back/return button to see the status.

## HOW TO OPERATE

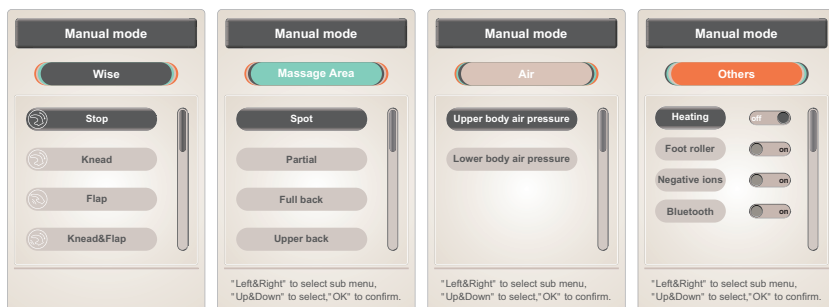
Function	Description
Firm	Select Firm to get the full effect of the massage.
Comfort	Offers the most pleasant massage experience
Relax	Soft and pleasant deep massage that relaxes the body and reduces fatigue
Stretch	Uses the pressure from the air pillows to give a massage that eases muscle tension in the waist.
Full body:	Deep massage that gives new energy to the body
Neck and shoulder	Focuses on the neck and shoulder, effectively works on easing sore and tired muscles.
Back and waist	Focuses on the back and waist. Soothes sore muscles
Full pressure	Focus on the upper arm, arm, knee, leg and foot. Relaxes the whole body.

### 6) Manual setting (go directly to the manual settings on the display)

- Press Menu to access the main menu on the display and then choose the manual icon on the display. Manual settings include; massage settings, massage position, air pressure massage and other functions.
- Press the left or right arrow to change the sub-menu, then press Arrow up or Arrow down to select the massage function. Press the Back/return button to go back.

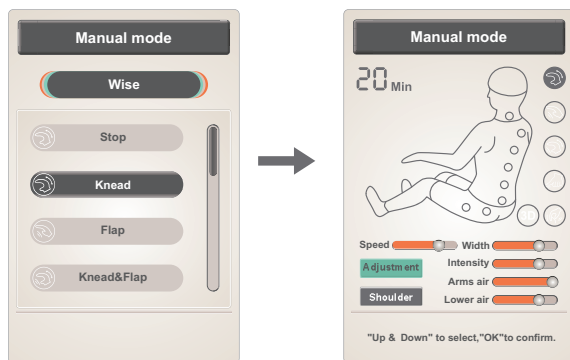


# HOW TO OPERATE



## 01) Manual setting

- The manual setting includes 6 types of massage: kneading, tapping, kneading and tapping, shiatsu, 3D and shoulder lifting. If you select tapping or shiatsu, the width can be adjusted. For the other types of massage, the speed can be adjusted - not including the stop function.
- Press up or down to select a massage icon. Press OK to confirm your selection.



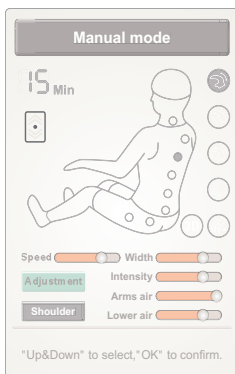
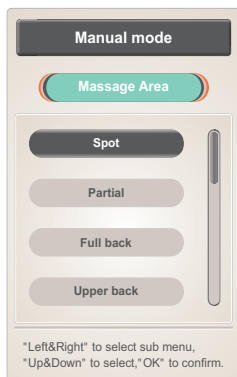
Please note: If you press the Stop icon, all massage functions will stop. If you press a massage icon, the selected type of massage will begin.

Function	Description	
Kneading	Speed	Adjust between: 5 speeds 5 widths
Tapping	Speed and width	
Kneading and tapping	Speed	
Shiatsu	Speed and width	
Shoulder lifting	Speed	
3D	Speed and width	

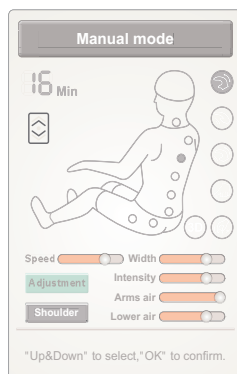
## HOW TO OPERATE

### 02) Manual setting (manual massage position)

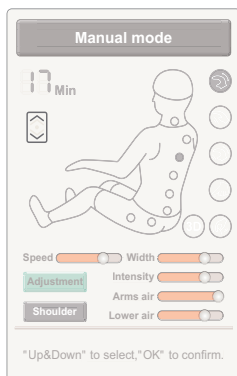
- Manual setting (massage position): Fixed point, partial, full back, upper back and lower back.
- Press up or down to select the partial massage icon. Press OK to confirm your selection.



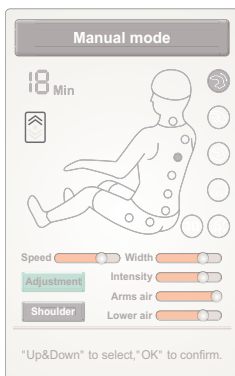
Fixed massage



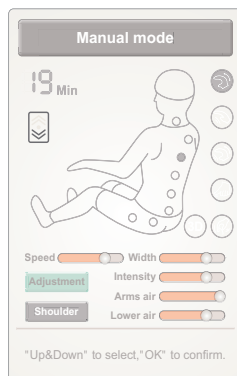
Partial massage



Entire back



Upper back



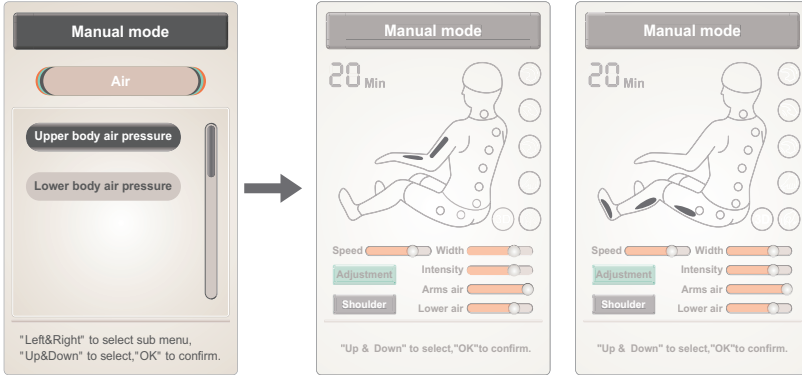
Lower back

Function	Description	
Fixed massage	Massage a certain area	Adjust up or down for the massage area when choosing a fixed massage or partial massage.
Partial massage	Partial massage back and forth in a small area	
Upper back	Massage for lower back	
Lower back	Massage for upper back	
Entire back	Massage for the entire back	

# HOW TO OPERATE

## 03) Manual setting (manual air pressure massage)

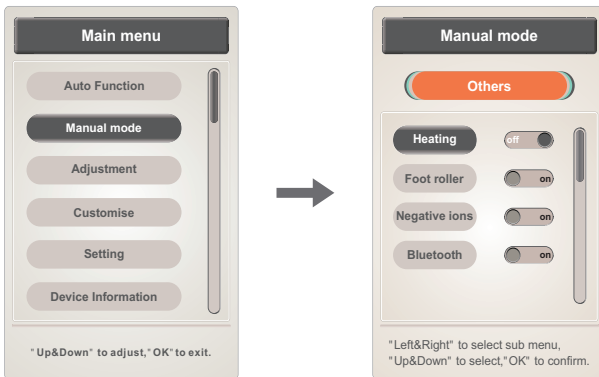
- Manual setting (air pressure massage) includes: Upper body air pressure and Lower body air pressure.
- Press up or down to select between the different air pressure massages. Press OK to confirm your selection.



Function	Description
Air pressure upper body	Turn the air pressure massage for the upper body on or off
Air pressure massage lower body	Turn the air pressure massage for the lower body on or off

## 04) Manual setting (manual extra)

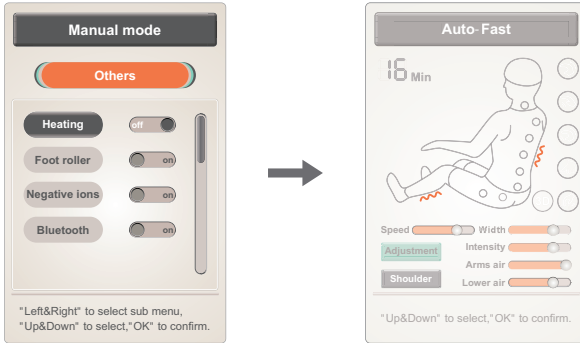
- Manual setting (extra) includes: Heating, Foot roller, Negative ions and Bluetooth.
- Press up or down to select the desired massage function. Press OK to activate or deactivate the function.



# HOW TO OPERATE

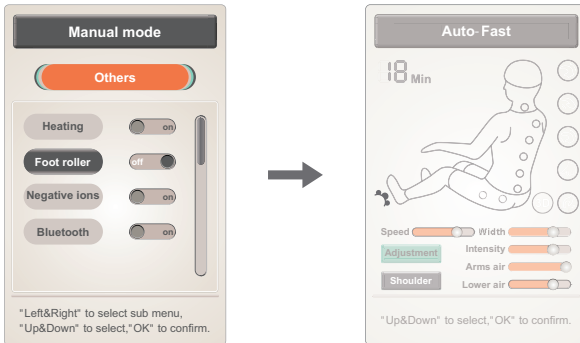
## Manual settings (extra back heating)

- Press OK to activate or deactivate the heat function. After 3 minutes, the heat function will be activated.
- Press up or down to select other massage functions. Press the Back/return button to go back.



## Manual setting (extra foot roller)

- Press OK to activate or deactivate the Foot Roller function.
- Press up or down to select other massage functions. Press the Back/return button to go back.

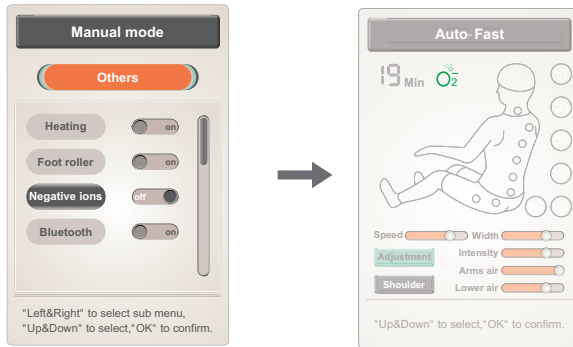




## HOW TO OPERATE

### Manual setting (extra negative oxygen ions)

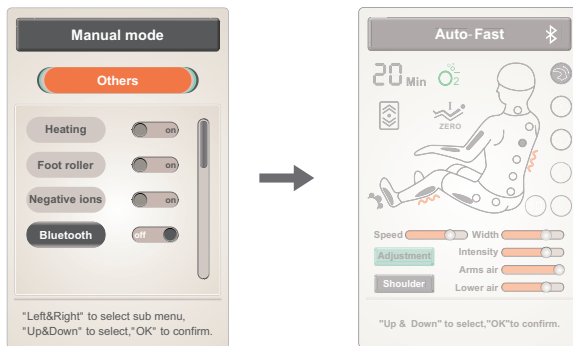
- Press OK to activate or deactivate the negative oxygen ions function.
- Press up or down to select other massage functions.  
Press the Back/return button to go back.



### Manual setting (extra Bluetooth).

Press OK to activate or deactivate the Bluetooth function.

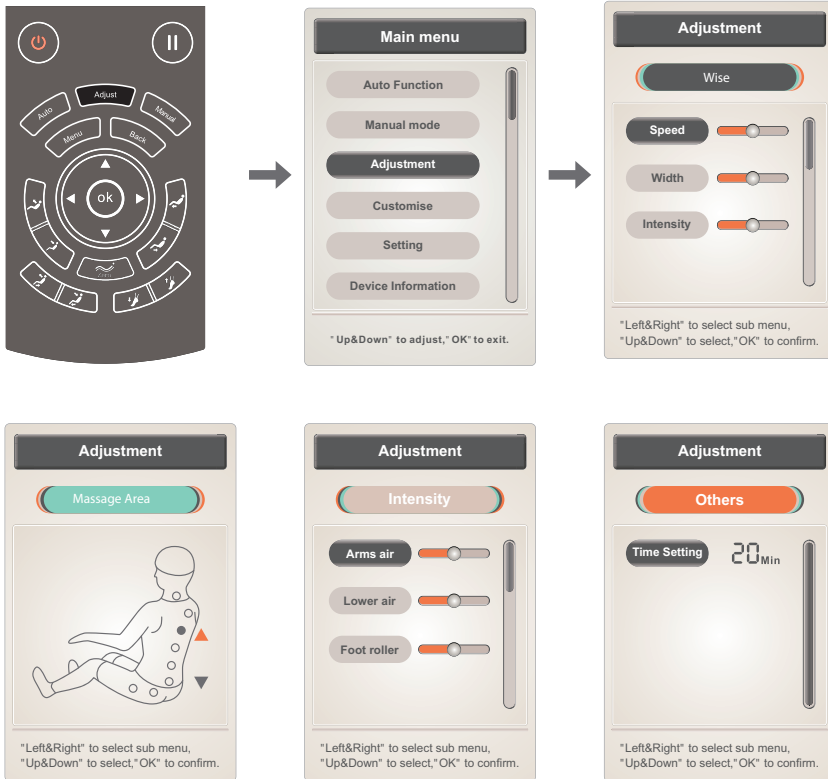
- Connect the Bluetooth in the massage chair with the Bluetooth in your phone or your other Bluetooth device. You can use Bluetooth to play music wirelessly.
- Press up or down to select other massage functions.  
Press the Back/return button to go back.



# HOW TO OPERATE

## 7) Adjust (Direct access to adjustment: press the adjust button to access the adjustment function on the display)

- Press the Menu to access the main menu on the display, and then select the Adjustment icon: includes massage settings, massage reach, massage intensity and other massage adjustment options.
- Press the left or right arrow to access the sub-menu. Select the massage function in the menu and then press up or down to select the adjustment function. Press OK to confirm or press Back to return to the previous screen.



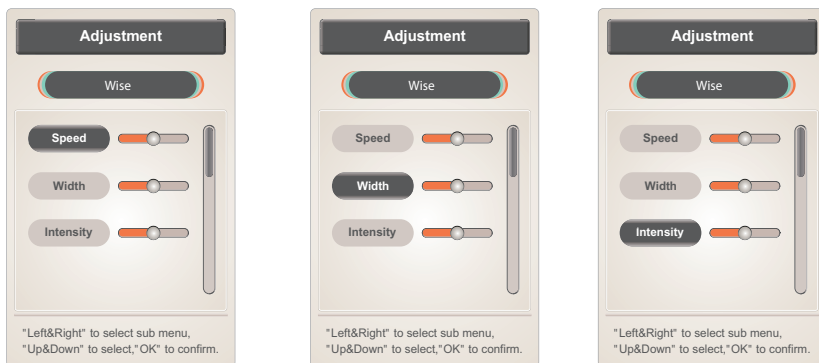
Direct access to adjustment: press the Adjust button to access the adjustment function on the display.

# HOW TO OPERATE



## 01) The adjustment functions

- The adjustment function (massage setting) includes: Speed, width, intensity, etc.
- Press up or down to select speed or width. Press OK to adjust the speed and width settings.



Please note:

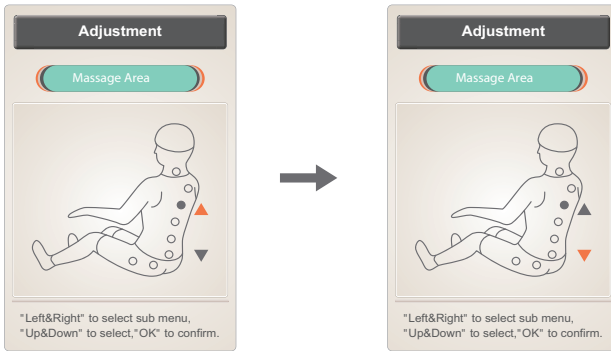
Speed: 5 levels of massage speed.

Reach: 5 levels of width for tapping and shiatsu mode.

# HOW TO OPERATE

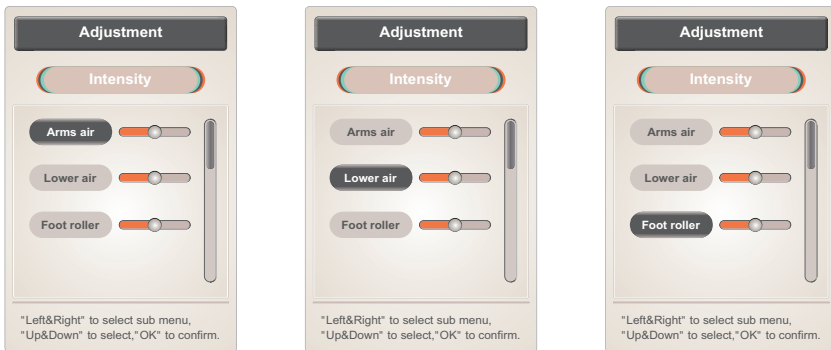
## 02) Adjustment: Adjust the massage area manually

- The adjustment function (massage area): for fixed massage or partial massage, press Arrow up and the massage head will move up or stop. Press Arrow down and the massage head will move down or stop.
- Press up or down to adjust the massage area.



## 03) Adjustment: Adjust intensity

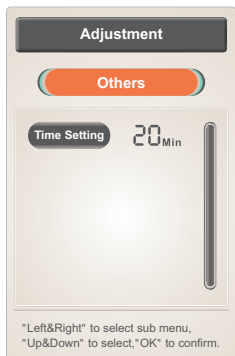
- The adjustment of intensity function includes: air pressure massage for the upper body, air pressure massage for the lower body and foot roller. There are 3 levels of adjustments to choose from.
- Press Arrow up or Arrow down to select the air pressure intensity in the air massage or foot roll intensity. Press OK to adjust the intensity.



## HOW TO OPERATE

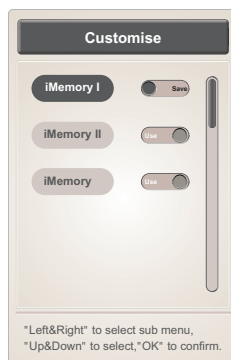
### 04) Adjustment: Adjust time

- The adjustment function: Set the timer. Press OK to change the timer by 5-minute intervals for each push of the button. When you exceed 40 minutes, the timer will go back to 0.
- Press OK to adjust the timer (each time you press the OK button 5 minutes will be added. You can adjust to settings between 5-40 minutes.)



### 8) User defined

- Press Menu to access the main menu. Select Customize. The Customize function includes memory and transfer functions, which are Memory I, Memory II and Memory III.
- Press the Arrow right or Arrow left to select save or transfer. Press OK to confirm your selection.
- Press Arrow up or Arrow down to select a memory program: Memory I, Memory II, Memory III.
- Storage: save all current massage settings, air pressure massage, angles/inclines and other massage functions.
- Transfer: reverts to the latest massage settings, air pressure massage, angle/incline and other massage functions.
- Press the Back button to go back.



# HOW TO OPERATE

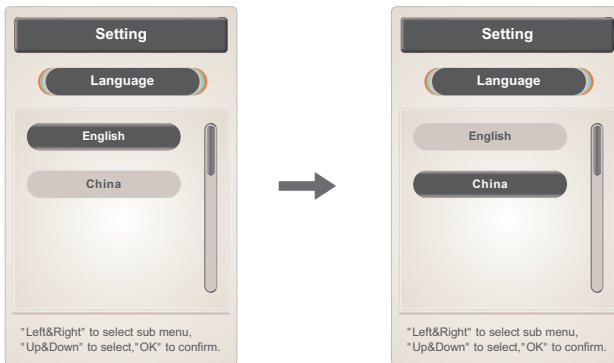
## 9) Setting

- Press Menu to access the main menu on the display. Select the Setting icon and go into settings, which includes: Language, Back Light, Lock Screen, etc.
- Press Left arrow or Right arrow to access the sub-menu. Press Arrow up or Arrow down to select a function or press Back to return to the last menu.



## 01) Setting: language

- Configure language: Configure to English or Chinese.
- Press up or down to select one of the languages. Press OK to confirm your selection.



## HOW TO OPERATE

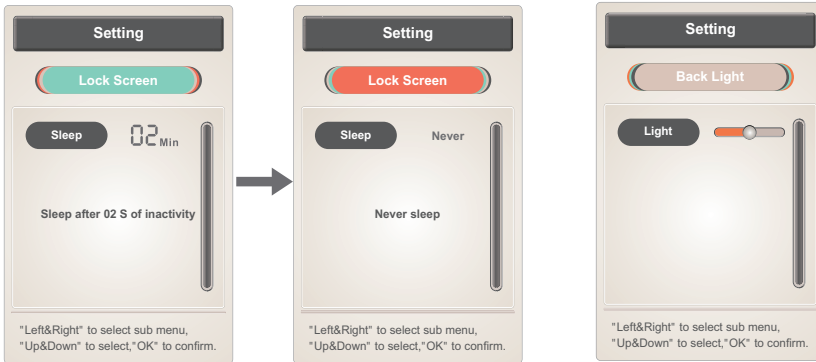
### 02) Setting: lock screen

The Lock screen setting includes adjustment to the timer or the Never lock function and the automatic lock when inactive for 2 seconds.

- Press OK on the remote control to adjust the time for when Lock screen should be activated. The Lock screen function can be set to 15 seconds, 30 seconds, 1 minute, 2 minutes or Never lock.

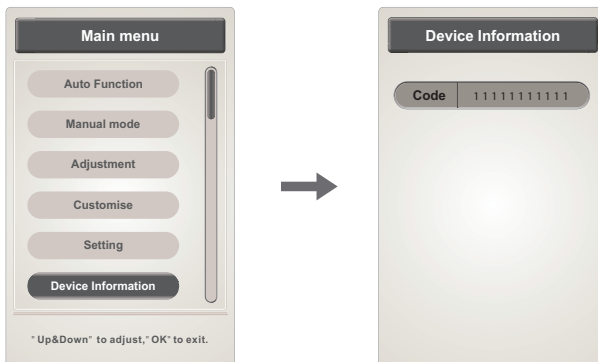
### 03) Setting (light intensity)

- configure light intensity: 5 different adjustment options:
- Press the Back button to go back.



### 10) Device Information

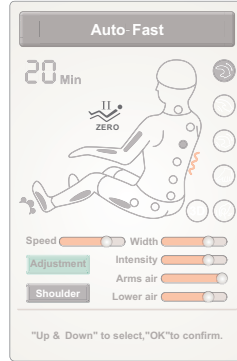
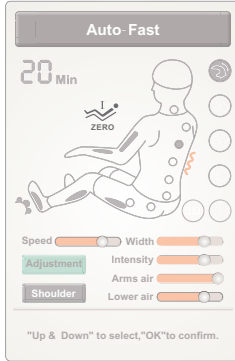
- Press Menu to access the main menu on the display. Select Device Information to view information about this product.
- Press up or down to select. Press OK to confirm your selection. Press Back to go back.



# HOW TO OPERATE

## 11) Zero gravity

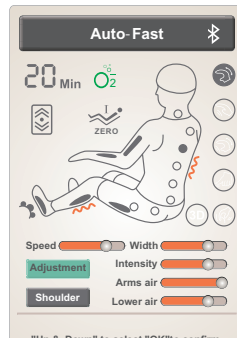
- Press Zero gravity to adjust the position for Zero gravity. Select Zero gravity I or Zero gravity II depending on your need.



Function	Description
	Zero gravity: adjust to zero gravity I incline.
	Zero gravity: adjust to zero gravity II incline.

## 12) Back

- When adjusting the massage functions, you can always return to the options by pressing the Back/return button.














## HOW TO OPERATE

---

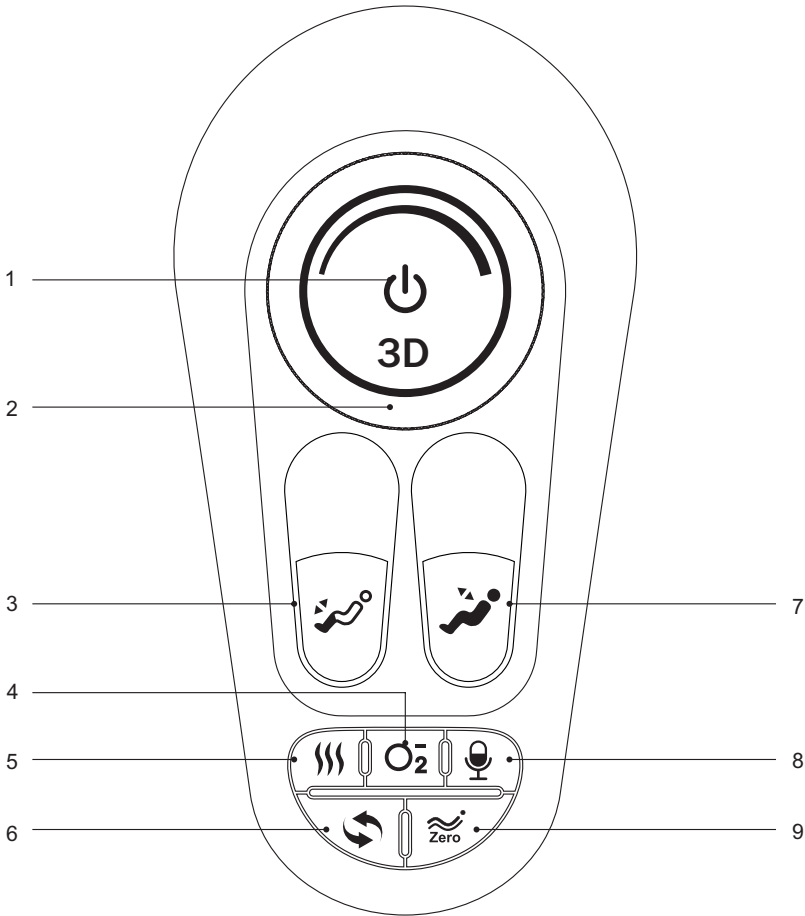
### 13) Adjustment of angle/incline

Function	Description
	Leg support UP: press to raise the position, release the button to stop at the desired position. When you are done, the massage chair will register the length of the legs itself.
	Leg support DOWN: press to lower the position, release the button to stop at the desired position. When you are done, the massage chair will register the length of the legs itself.
	Back support UP: press to raise the position.
	Back support DOWN: press to lower the position.
	Raise position: press to raise the massage chair (the back support will be raised and the leg support will be lowered). Release the button to stop at the desired position. When you are done, the massage chair will register the length of the legs itself.
	Lower position: press to lower the massage chair (the back support is lowered and the leg support is raised). Release the button to stop at the desired position. When you are done, the massage chair will register the length of the legs itself.
	Zero gravity: press to adjust the position of the leg support and back support to zero gravity, which has two different levels (normal and extra).
	Foot support SHORTEN: press to manually shorten the foot support. Release the button to stop at the desired length.
	Foot support EXTEND: press to manually extend the foot support. Release the button to stop at the desired length.

## HOW TO OPERATE










---

### 3. Overview of shortcut keys on the left armrest of the massage chair



1. On/off: turns the massage chair on and off
2. 3D intensity: adjustment of 3D intensity
3. Foot support adjustment: adjusts the length of the foot support
4. Negative oxygen ions: turn the function on or off
5. Heat function: turn the function on or off
6. Auto: turn the auto function on or off
7. Raise function/lower function
8. Microphone: turn the voice control for massage functions on or off
9. Zero gravity: adjust angle/incline with zero gravity

## HOW TO OPERATE

Function	Description
	<p>On/off: press for 1 second to stop. Press for 3 seconds to turn on or off. If there is more than a 20-minute pause, all massage functions will stop automatically.</p>
	<p>3D intensity: 3D massage power where the massage head moves forward or retracts.</p>
	<p>Foot support SHORTEN: press to shorten</p>
	<p>Foot support EXTEND: press to extend</p>
	<p>Raise function: The back support is raised and the foot support is lowered. Release the button to stop. The length of the feet are automatically registered.</p>
	<p>Lower function: The back support is lowered and the leg support is raised. Release the button to stop. The length of the feet are automatically registered.</p>
	<p>Heat function: turn the heat function on or off</p>
	<p>Negative oxygen ions: turn the function on or off</p>
	<p>Microphone: turn the voice control on or off</p>
	<p>Auto: turn the auto function on or off</p>
	<p>Zero gravity: adjusts the automatic leg support and back support to a zero gravity position that has two different levels to choose from.</p>

## HOW TO OPERATE

---

### 4. Voice control

-When the massage chair is turn on or in standby mode, say “Hi Alice” to activate voice control.

-When the voice control is activated, the massage chair will say: “I am here.” Now you have 6 seconds to give the massage chair a voice command stating the massage programme that you want to activate. If you do not give the correct voice command within 6 seconds, the voice control will automatically be switched off and you will need to activate it again.

### Voice control

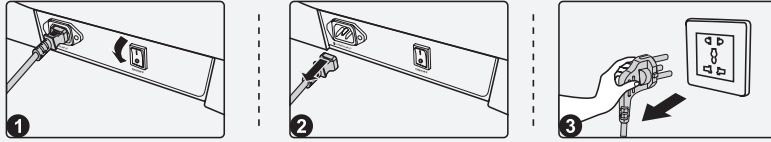
Activate voice control by saying: “Hi Alice.” The response will be: “I am here.”

NO.	Command	Response:
1	Massage on (turn on the massage)	Response: OK, massage on
2	Massage close (end the massage)	Response: Ok, massage close
3	Comfort massage	Response: OK, comfort massage
4	Relax massage	Response: OK, relax massage
5	Full body massage	Response: OK, full body massage
6	Neck and shoulder massage	Response: OK, neck and shoulder massage
7	Back and waist massage	Response: OK, back and waist massage
8	Stretch massage	Response: OK, stretch massage
9	Fixed massage	Response: OK, fixed massage
10	Change the other mode	Response: OK, change the other mode
11	Go little down	Response: OK, go little down
12	Go little up	Response: OK, go little up
13	Open the air pressure	Response: OK, open the air pressure
14	Close the air pressure	Response: OK, close the air pressure
15	Up the seat position	Response: OK, up the seat position
16	Down the seat position	Response: OK, down the seat position
17	Stop adjustment	Response: OK, stop adjustment

## HOW TO OPERATE

### 5. Turn off the massage chair, stop the massage

- During a massage, you can press the on/off button to immediately stop the massage. The back support and foot support are reset, the massage is done and all massage functions are turned off immediately. The chair will return to its start position once you stop the massage.
- Turn off the power to the whole massage chair, see the illustration below.



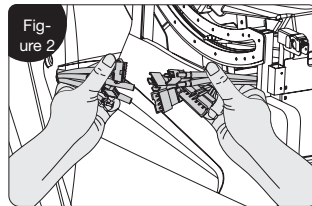
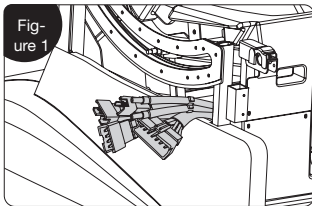
- 1 Cut the power supply to the whole massage chair.
- 2 Pull the cord out.
- 3 Remove the plug from the socket.

### 6. Bluetooth

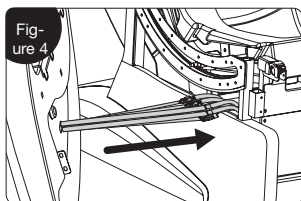
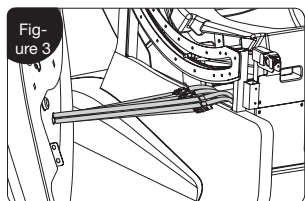
1. Go to the functions for Bluetooth on your smart device and search for new Bluetooth devices.
2. Find the following user name: IMCM-XXXX and then connect your device to the massage chair.
3. Find a playlist on your smart device and turn on the music.

### 7. Installing armrests

Connect the air hose to the armrest (**Figure 1**)  
Connect the two multi-plugs to the chair (**Figure 2 & 3**)



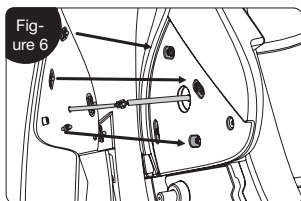
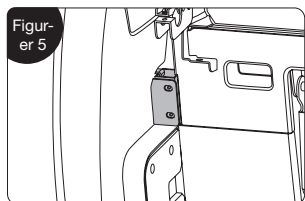
Please note: the air hose and cord with 4 plugs must be directed under the slide rail (**Figure 4**).



### Attaching the armrest:

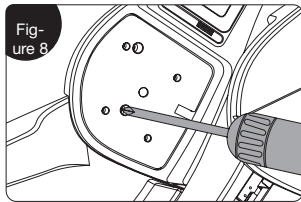
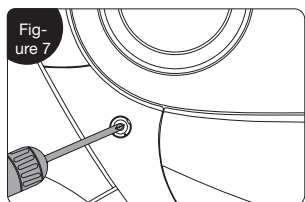
The joist hanger with a hook is attached to the square pipe profile on the front part of the chair (**Figure 5**).

The angle bracket is attached firmly (**Figure 6**).



Tighten the screw (M6\*20) to the exterior under the loudspeaker (**Figure 7**).

Open the zipper and tighten the screw (M5\*16) from the shoulder position (**Figure 8**).

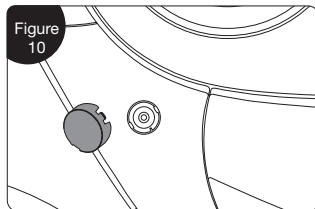
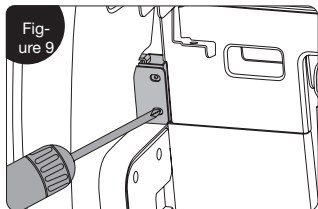


## HOW TO OPERATE

---

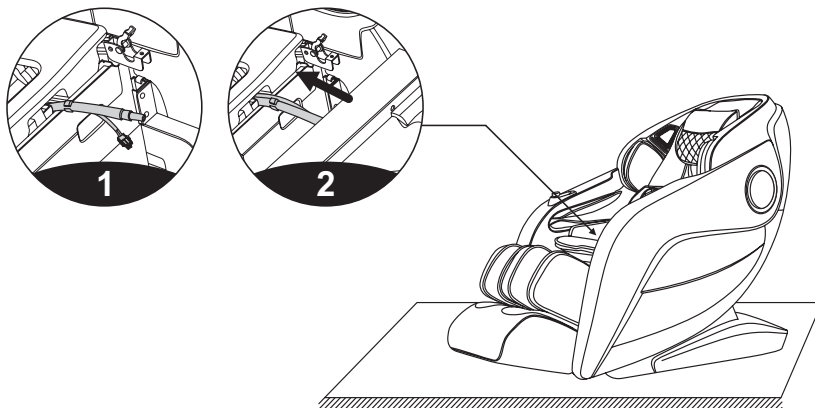
The two screws (M5\*16) under the hanging cover for the foot support are screwed in and tightened (**Figure 9**).

The decorative cover is buttoned on below the speaker (**Figure 10**).



### 8. Installing the leg support

**Steps 1 & 2:** Connect the air hose and multi-plug to the front of the chair with the leg support.

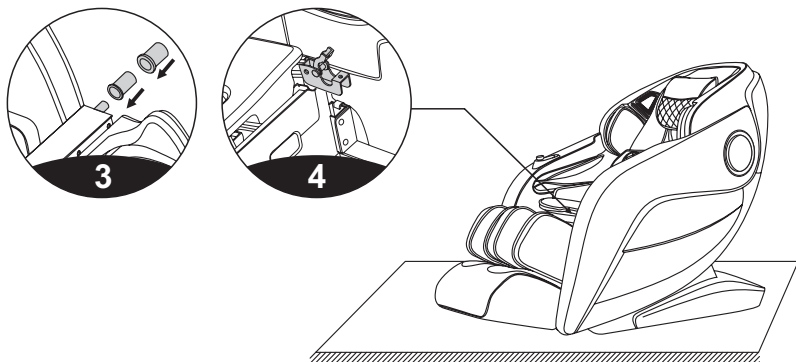


## HOW TO OPERATE

---

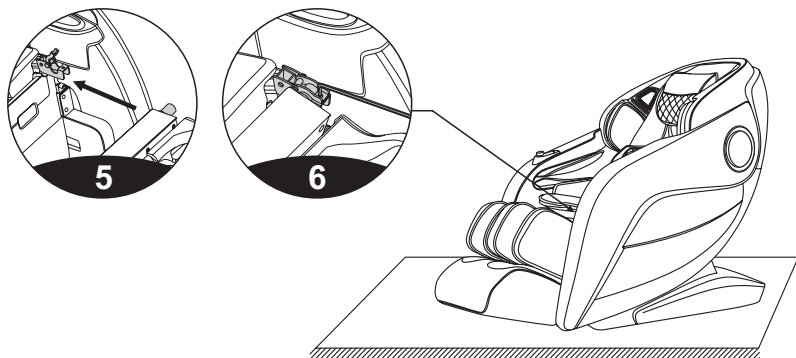
**Steps 3 & 4:** Collect the inner and out sleeves on the leg support's axle.

Please note: the flange should turn inwards towards the middle of the chair.



**Steps 5 & 6:** Open the cover on the front of the chair and attach the leg support to the chair.

Please note: the cord and air hose need to be pushed into the chair so that they do not get stuck.

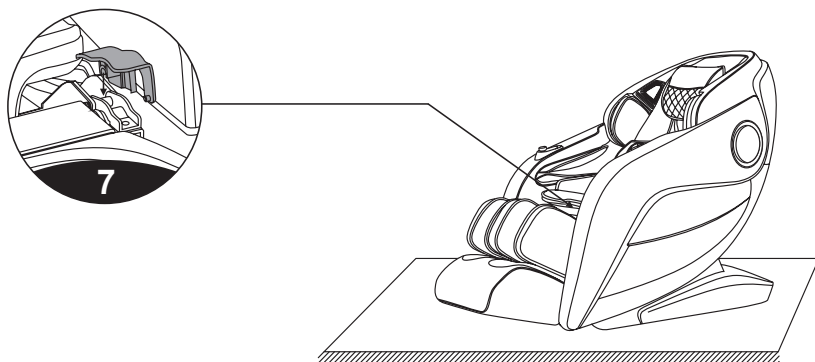




## HOW TO OPERATE

---

**Step 7:** Fasten the screws (2 x M5\*12.9 and 1 x 6\*12\*1.5 with a 4# hex key to the cover and attach the plastic capsules.  
Close the zipper between the chair and the leg support.

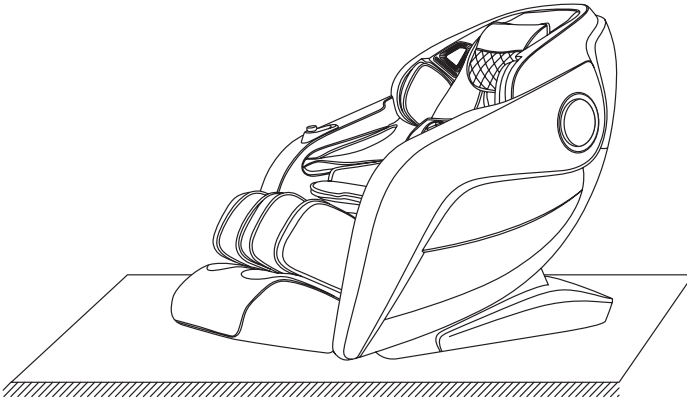


## HOW TO OPERATE

---

### 9. Floor protection

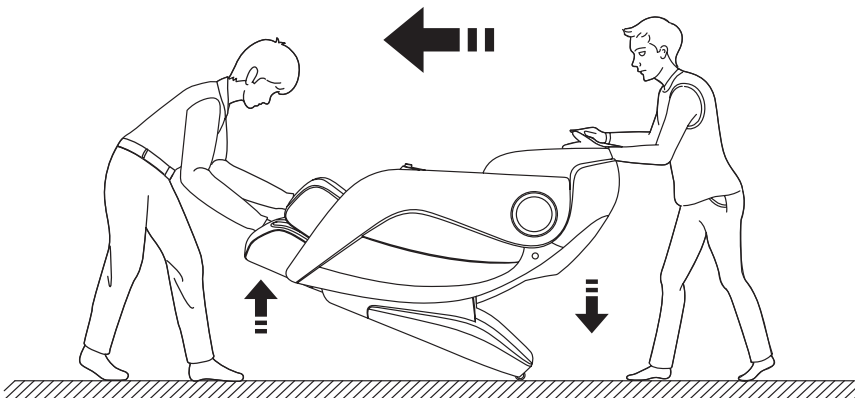
- If you place the massage chair on a wooden floor, it is recommended that you first put a carpet over that spot as the chair is heavy and may damage wooden floors.



Be careful: Even though the massage chair has wheels, you should not move it around in compact areas. Let two people lift the chair. Hold on to the base and back support instead of the armrests when moving the chair.

### 10. Move the chair

- Ensure that all cords are disconnected and wound up before you move the massage chair. It takes at least two people to move the massage chair. One person lifts up the foot support and the other person lowers the back support. When the centre of gravity is on the wheels, the massage chair can easily be moved to the location you want.



Please note: Before moving the massage chair, you must disconnect it from the power source and the cord should be pulled out.

## **SPECIFICATIONS**

---

Configuration: 2

Product name: Witt Premium Smart 3D massage chair

Voltage: 110-120V - 60 Hz

220-240V - 50Hz/60Hz

Power consumption: 220W

Time: 20 minutes

Safety design: Class 1

Materials: PVC, PA, steel parts and electrical and electronic components.

## **WARRANTY AND SERVICE**

---

### **IMPORTANT:**

Warranty covers materials and labour and lasts for 2 years. When contacting the service department, you must state the product's name and serial number and fill out the service form at: <https://service.witt.dk/service/da/Other/Service.aspx>. You can find this information on the type plate. You can write down the information on the type plate here in these instructions so that you have them at hand. This makes it easier for the service technician to find the correct spare parts.

### **THE WARRANTY DOES NOT COVER:**

1. Faults and damage that are not due to manufacturing or material issues
2. Regular wear and tear.
3. Damage caused by the use of unoriginal spare parts
4. Damage resulting from failing to follow the instructions on how to use the device
5. If the device has not been set up/assembled as specified in the instructions
6. If non-professionals have installed or repaired the product.

### **TRANSPORT DAMAGE**

If the product is damaged during transport and this is only discovered when the retailer delivers the product to the customer, this is exclusively a matter between the customer and the retailer. In cases where customers have transported the product themselves, the supplier shall not be liable for any potential damage during transport. Any damage caused during transport must be reported immediately and no later than 24 hours after the product has been delivered. If not, the customer's claim will be rejected.

### **UNWARRANTED SERVICE VISITS**

If you call a service technician and it turns out that you could have fixed the error yourself by, for example, following the instructions in this manual or by changing a fuse in the fuse box, the customer will be charged for the service visit.

### **COMMERCIAL PURCHASES**

Commercial purchases are all purchases of devices that are not intended to be used in private households but instead intended to be used for commercial purposes (in restaurants, cafés, canteens, etc.) or intended to be hired out or otherwise used by multiple users in turn. There is no warranty offered for commercial purchases, as this product is only intended for regular household use.

### **SERVICE**

The customer is always responsible for ensuring that the product can be reached by the technician when exercising the warranty to request a service visit. The warranty covers the product in the condition that the customer received it. The technician's work is subject to working environment regulations (such as regulations concerning heavy lifting) and this has an impact on what the technician is allowed to do during a service visit.

We accept no liability for printing errors.

## ENVIRONMENT

---

The device complies with the provisions of EU Directive 2012/19/CE on the disposal of electronic equipment. Electrical and electronic equipment (EEE) contains materials, components and substances that can be dangerous and harmful to people's health and the environment if the electrical and electronic equipment (EEE) is not disposed of correctly.



Products marked with the crossed over trash bin are electrical and electronic equipment. The crossed over trash bin symbolises that electrical and electronic equipment must not be disposed of together with unsorted household waste - it needs to be disposed of separately.



Users must use the municipal/council waste disposal scheme to reduce the environmental impact of disposing electrical and electronic equipment and allow for more recycling and for the waste to be used in other useful ways.

For more details regarding how to treat and recycle this product, contact your local recycling centre.





